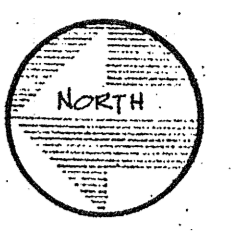


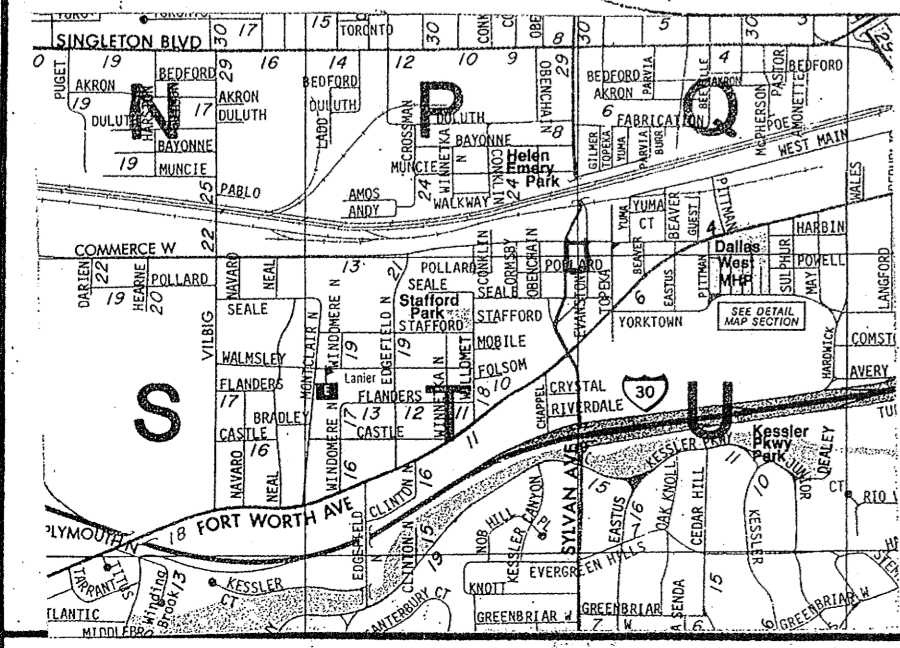
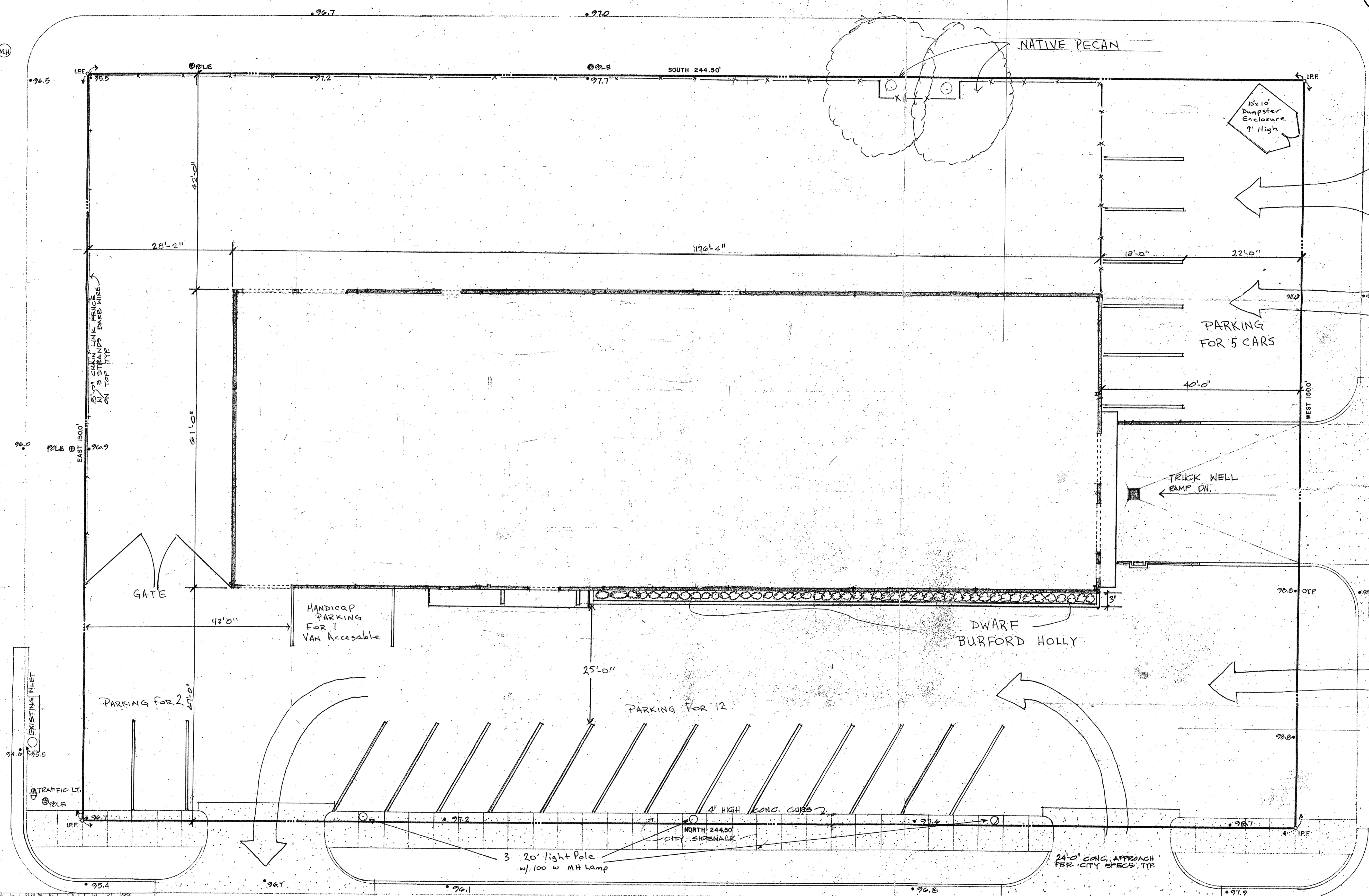
FIKE HYDRANT ON OPPOSITE SIDE OF STREET USED AS BENCH MARK - TOP OF OPERATING NUT EL. 100.2

EVANSTON AVE. (40' ROW)



WEST COMMERCE STREET (60' ROW)

POLLARD STREET (60' ROW)



S I T E P L A N

SYLVAN STREET

WADE TRANSMISSION & GEAR CO. CASE # Z056-164
2222 SYLVAN AVE
CITY BLOCK 3999

OWNERS: HOWARD W. WADE & RALPH S. WADE
ZONING: INDUSTRIAL INSIDE NOT POTENTIALLY INCOMPATIBLE PD714
BUILDING: 10,500 SQ FT SITE: 36,675 SQ FT OR .8419 ACRES

SCALE: 1" = 10'
PARKING: 18 SPACES WITH HANDICAPED REQUIRED
19 SPACES & 1 HANDICAPED SUPPLIED

061234
26320

APPROVED BY CITY COUNCIL
APR 26 2006

Richard Heston
City Secretary

Specific Use Permit
No. 1619

Approved
City Plan Commission
March 2, 2006

2150-125